

# GROW STRONGER<sup>®</sup>

---



OPTIMISE HOST HEALING IN A NEW  
ERA OF TRUE BONE REGENERATION



**THE BEST  
DENTISTS  
DON'T  
STAND  
STILL.  
THEY'RE  
ALWAYS  
GROWING.**

Born from a desire to move beyond traditional “GBR”, donor grafts and artificial scaffolds, EthOss® was created to pioneer True Bone Regeneration in dentistry and oral surgery.

The initial concept was simple: “the body wants to heal, let’s work with it”. This was key to the development of EthOss – a grafting material which works with the body, upregulating the host healing response to regenerate lost bone.

Founded by Dr Peter Fairbairn, a world-renowned clinician, and Dr Paul Harrison, a leading bone regeneration industry expert, the company has grown significantly since being founded in 2013 and is now a global brand.

**Do your best  
work with the  
new standard.**

# WHY ETHOSS?



## SIMPLER

Its built-in calcium sulphate binder helps stabilise the graft and prevent soft tissue ingress, eliminating the need for an added collagen membrane.

## SAFER

EthOss is 100% synthetic. There's no human or animal content, so no risk of cross contamination.

## EASIER

EthOss comes in a handy syringe applicator, in two sizes - 0.5cc and 1.0cc. It's easy to mix, quick to apply and, because it keeps its volume well, there's no need for over-packing.

## STRONGER

EthOss is fully absorbed by the body, as it's replaced by new healthy host bone - up to 50% in as little as 12 weeks.





# TRUSTED MATERIALS, INNOVATIVE COMBINATION.

EthOss is a combination of 65%  $\beta$ -Tricalcium Phosphate and 35% Calcium Sulphate. This innovative combination is key to its' success.

## Why $\beta$ -Tricalcium Phosphate ( $\beta$ -TCP)?

$\beta$ -TCP has been used medically for many years and is widely researched and trusted, with several benefits which make it particularly suitable for dentistry:

- Full resorption in line with the rate of new host bone formation
- Osteoconductive
- High osteoinductive potential with a large research base in this area
- Patient preference - no concerns over donor tissue or cross infection risks
- All  $\beta$ -TCP is not the same - EthOss uses the latest generation of  $\beta$ -TCP

## Why Calcium Sulphate?

The oldest recorded biomaterial, Calcium Sulphate has been used in surgery for over 120 years.

Whilst it does not possess the same bone regeneration capabilities as  $\beta$ -TCP, Calcium Sulphate brings one major benefit to the equation: it sets in situ, creating a stable graft with an integrated cell-occlusive barrier. This helps prevent soft tissue ingress, **removing the need for a separate collagen membrane** and giving the periosteum (and related blood supply) direct access to the graft site from day one.

## In Combination

The unique combination of these two materials gives EthOss significant benefits – regenerating host bone quickly (human biopsies regularly show 50% new bone at 12 weeks) and without the need for a separate collagen membrane.

## Specifications

<b>Composition</b>	65% $\beta$ -Tricalcium Phosphate ( $\beta$ -TCP) $\text{Ca}_3(\text{PO}_4)_2$ 35% Calcium Sulphate $\text{CaSO}_4$
<b>Resorption</b>	50% new bone in 12 weeks
<b>Mixing agent</b>	Standard sterile saline (0.9% Sodium Chloride) only
<b>Recommended re-entry time</b>	12 weeks
<b>Units available</b>	3 x 0.5cc 3 x 1cc



50% NEW BONE.  
HUMAN HISTOLOGY  
AFTER 12 WEEKS.



# CASE STUDY



3 weeks healing post extraction



Implant placement & palatal graft



Simultaneous buccal graft



New bone formation at 12 weeks - grown over implant



EthOss is the ideal bone grafting material. The Calcium Sulphate component not only removes the need for a membrane, but it has bacteriostatic properties which minimise infections.

**Dr Costa Nicolopoulos, UAE**



EthOss has simplified my bone augmentation procedures. Easy handling, very stable and predictable reproducible results. So dependable, I can't operate without it.

**Dr Peter Bouboulos, Australia**



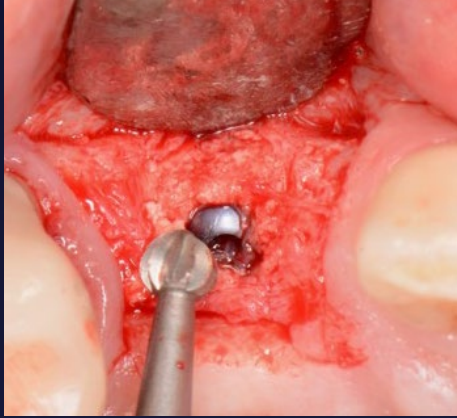
The clinical properties of EthOss make it a highly desirable grafting material, providing a modern bone regeneration solution.

**Dr Verena Toedtling, UK**



EthOss combines mechanical integrity with predictable biologic results - it is a pleasure to use it in my daily practice.

**Dr H.L. Tan, Malaysia**



Bur needed to access implant



Loaded 1 year



The superior handling combined with excellent clinical results means that for me, EthOss is a must.

**Dr Wasim Fazel, UK**



I'm delighted to have discovered EthOss - it gives consistent & predictable results, is easy to handle and turns over to new bone quickly.

**Dr Nicolas Widmer, Switzerland**

## CLINICAL APPLICATIONS INCLUDE:

- **BUCCAL DEFECTS**
- **SINUS AUGMENTATION**
- **RIDGE PRESERVATION**
- **PERIODONTAL DEFECTS**
- **PERI-IMPLANTITIS**
- **CYST SITE RESTORATION**



# WELCOME TO THE NEW STANDARD.

© EthOss Regeneration Ltd, 2020. All rights reserved. Ver. 01\_07-2020.  
EthOss, ETHOSS, Grow Stronger and GROW STRONGER are  
registered trademarks of EthOss Regeneration Ltd.

EthOss Regeneration Ltd  
8 Ryefield Court, Silsden,  
BD20 0DL, UK

Tel: +44 (0) 1535 843106  
[info@ethoss.dental](mailto:info@ethoss.dental)  
[www.ethoss.dental](http://www.ethoss.dental)



Made from recycled paper.  
Please recycle after use.